

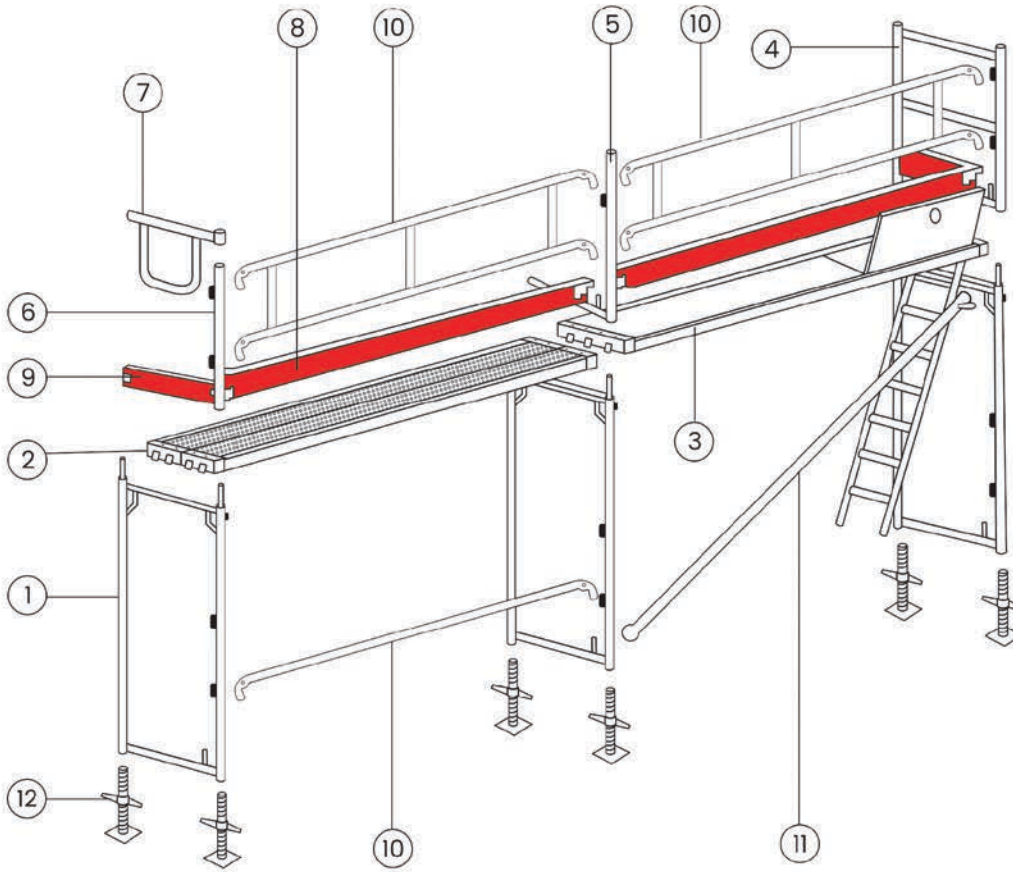


# ECOSCAFF

ALUMINIUM SCAFFOLDING SYSTEM

Product Catalogue

# ABOUT ECOSCAFF SYSTEM



1. Vertical Frame (2M).
2. Steel platforms.
3. Aluplywood access platform with ladder.
4. End frame (top).
5. L frame.
6. Hand rail post (1M).
7. D frame.
8. Toe board.
9. End toe board.
10. Aluminum double Handrail.
11. Diagonal bracing.
12. Base jack.

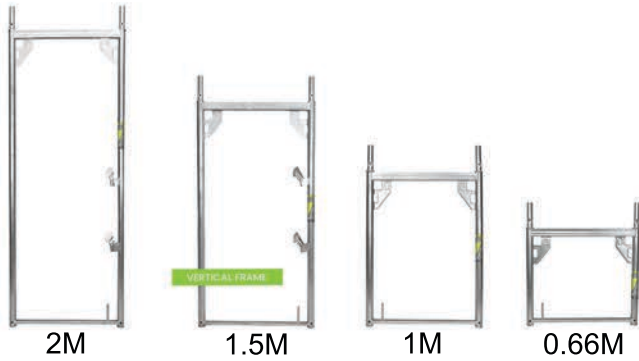
**Productivity,**  
Prefabricated lightweight components means that the scaffolding is erected with ease and up to five times faster than conventional systems.

**Stability,**  
A rigid structure with diagonal bracings makes it stable and steady to work on.

- Protection,**
- Hot-dip galvanized zinc protects steel components against adverse weather conditions and corrosion.
  - Aluminium components are corrosion resistant to weather.

## ALUMINIUM VERTICAL FRAME

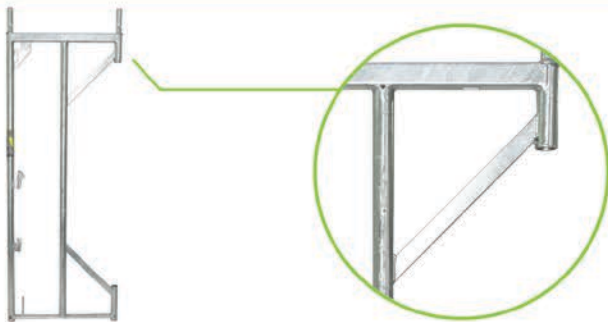
- Aluminium frames are made from a 48.3mm aluminium tube 4.0mm thickness.
- They have wedges for installation of hand rails and a pin to set in a wooden toe board.
- Different sizes of the frame are available



Catalogue no	Height(M)	Width(M)	Weight(KG)
ECS-73-01-02-01	2.00	0.73	9.20
ECS-73-01-02-02	1.50	0.73	7.40
ECS-73-01-02-03	1.00	0.73	5.85
ECS-73-01-02-04	0.66	0.73	4.34

## STEEL SIDE FRAME

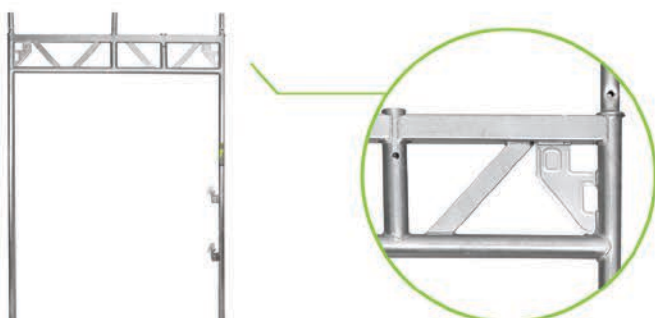
- Steel tube profile  $\varnothing$  48.3 x2.7mm, hot-dip galvanized.
- It is used to bypass wall ledges and protrusions.



Catalogue no	Height(M)	Width(M)	Weight(KG)
ECS-73-01-01-07	2.00	0.73	25.20

## STEEL WALKTHROUGH FRAME

- Steel tube profile  $\varnothing$  48.3 x2.7mm, hot-dip galvanized.
- Serves as a walkway for pedestrians under the scaffolding.



Catalogue no	Height(M)	Width(M)	Weight(KG)
ECS-73-01-01-08	2.20	1.53	36.00

Steel plate used to produce the boards:

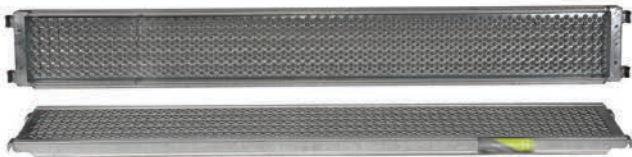
Profile made of **S235JRH** plate 1.25mm or 1.5mm

Front of the platform made of **S355JRH** plate 2.00 mm

## STEEL BOARD

- Hot-dip galvanized boards fits into U-profiles of the vertical frames.
- The surface of the steel platform is perforated which prevents slipping.
- Up to 3M spans.

Catalogue no	Length(M)	Width(M)	Weight(KG)
ECS-73-02-01-01	3.07	0.32	19.00
ECS-73-02-01-02	2.57	0.32	16.50
ECS-73-02-01-03	2.07	0.32	13.40
ECS-73-02-01-04	1.57	0.32	11.50
ECS-73-02-01-05	1.09	0.32	7.50
ECS-73-02-01-06	0.73	0.32	5.70



## ALUPLY PLATFORM

- Non-slip plywood dec, waterproof.
- One unit between two frames is sufficient
- Light weight.
- Up to 3M span possible.

Catalogue no	Length(M)	Width(M)	Weight(KG)
ECS-73-02-03-01	3.07	0.64	25.00
ECS-73-02-03-02	2.57	0.64	20.40
ECS-73-02-03-03	2.07	0.64	16.40
ECS-73-02-03-04	1.57	0.64	13.10
ECS-73-02-03-05	1.09	0.64	9.70
ECS-73-02-03-06	0.73	0.64	7.20



## ALUMINIUM PLATFORM

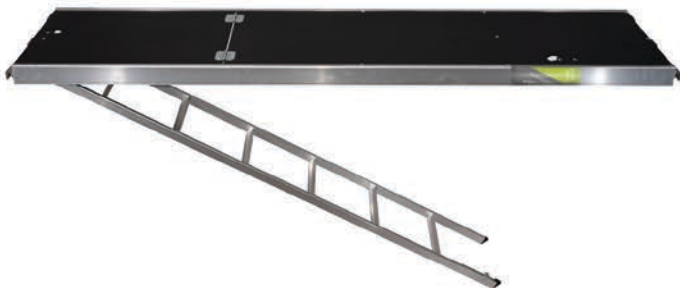
- Made entirely of aluminium.
- The lightest version of the platform available.
- Waterproof, wear-resistant, non slip.



Catalogue no	Length(M)	Width(M)	Weight(KG)
ECS-73-02-02-01	3.07	0.64	21.00
ECS-73-02-02-02	2.57	0.64	16.80
ECS-73-02-02-03	2.07	0.64	13.50
ECS-73-02-02-05	1.57	0.64	10.50
ECS-73-02-02-05	1.09	0.64	7.50
ECS-73-02-02-06	0.74	0.64	4.50

## ALUPLY ACCESS PLATFORM WITH LADDER

- Frame made of aluminum, walkway made of plywood.
- Ladder is integrated into the platform.
- Allows access between decks.



Catalogue no	Length(M)	Width(M)	Weight(KG)
ECS-73-02-05-01	3.07	0.64	29.00
ECS-73-02-05-02	2.57	0.64	25.00

## ALUMINIUM ACCESS PLATFORM WITH LADDER

- Entirely made of aluminium.
- Ladder integrated into the platform.
- light weight.

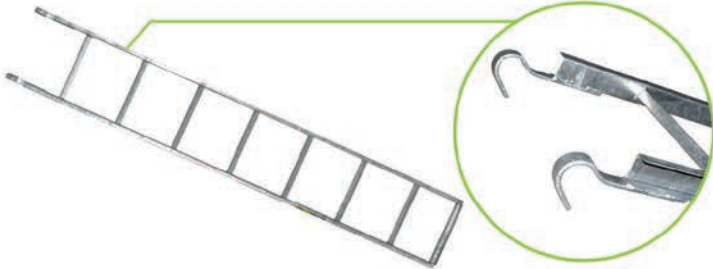


Catalogue no	Length(M)	Width(M)	Weight(KG)
ECS-73-02-06-01	3.07	0.64	25.00
ECS-73-02-06-02	2.57	0.64	23.00

## LADDER

- Made of steel or aluminium.

Catalogue no	Length(M)	Width(M)	Weight(KG)
ECS-UNI-12-01-01 Steel	2.15	0.35	8.00
ECS-UNI-12-01-02 Alu	2.15	0.35	4.00



## SINGLE STEEL HAND RAIL

- serves as horizontal protection.  
Steel tube profile Ø 38 x 1.8mm, hot-dip
- galvanized.

Catalogue no	Length(M)	Weight(M)
ECS-73-03-01-01	3.07	5.90
ECS-73-03-01-02	2.57	4.90
ECS-73-03-01-03	2.07	4.00
ECS-73-03-01-04	1.57	3.10
ECS-73-03-01-05	1.09	2.60
ECS-73-03-01-06	0.73	2.00



## DOUBLE ALUMINIUM HAND RAIL

- Made of aluminium.

Catalogue no	Length(M)	Hight(M)	Weight(KG)
ECS-73-03-02-01	3.07	0.50	6.70
ECS-73-03-02-02	2.57	0.50	5.80
ECS-73-03-02-03	2.07	0.50	4.60
ECS-73-03-02-04	1.57	0.50	3.50



## D FRAME HANDRAIL

- Made of steel.
- Used as end handrail intermediate decks.



Catalogue no	Length(M)	Weight(KG)
ECS-70-03-03-01	0.73	4.00

## DIAGONAL BRACING

- Steel tube profile hot-dip galvanized
- The length of the diagonal bracing is to suit the length and height of the scaffolding bay



Catalogue no	Length(M)	Weight(KG)
ECS-73-04-02-01 (Bay 3.07M)	3.60	8.50
ECS-70-04-02-02 (Bay 2.57M)	3.20	7.60
ECS-70-04-02-03 (Bay 2.07M)	2.80	6.60

## L FRAME 1M

- Made of steel or aluminium.
- Allows installing handrails on the top deck.
- Also locks in the platform.



Catalogue no	Height(M)	Width(M)	Weight(KG)
ECS-73-06-01-01 Steel	1.00	0.73	6.00
ECS-73-06-02-01 Alu	1.00	0.73	2.50

## L FRAME 2M

- Made of steel
- Allows installing additional handrails.
- Also locks in the platform.



Catalogue no	Height(M)	Width(M)	Weight(KG)
ECS-73-06-01-02	2.00	0.73	8.50

## HANDRAIL POST 1M

- Made of steel or aluminium.
- Allows installing handrails on the top deck.



Catalogue no	Height(M)	Weight(M)
ECS-73-05-01-01 Steel	1.00	5.00
ECS-73-05-02-01 Alu	1.00	2.40

## HANDRAIL POST 2M

- Made of steel.
- Allows installing more handrails on the top deck.



Catalogue no	Height(M)	Weight(M)
ECS-73-05-01-02	2.00	9.00

## END FRAME (TOP)

- Made of steel or aluminium.
- Has a mounting pin for the toe board.
- End handrail for the top deck.



Catalogue no	Height(M)	Width(M)	Weight(KG)
ECS-73-01-01-05 Steel	1.00	0.73	11.50
ECS-73-01-02-05 Alu	1.00	0.73	5.20

## HANDRAIL COUPLER ON BOLT

- Made of steel, hot-dip galvanized.
- Allows installing more handrails inside the frame.



Catalogue no	Weight(M)
ECS-73-10-01-10	1.10

## SIDE TOE BOARD

- Made of solid spruce wood.
- Finished steel reinforcements at both ends.



Catalogue no	Length(M)	Hight(M)	Weight(KG)
ECS-73-07-02-01	0.73	0.15	1.40

## HORIZONTAL TOE BOARD

- Made of solid spruce wood.
- Finished steel reinforcements at both ends.



Catalogue no	Length(M)	Hight(M)	Weight(KG)
ECS-73-07-01-01	3.07	0.15	5.80
ECS-73-07-01-02	2.57	0.15	4.90
ECS-73-07-01-03	2.07	0.15	3.90
ECS-73-07-01-04	1.57	0.15	3.00
ECS-73-07-01-05	1.09	0.15	2.10
ECS-73-07-01-06	0.73	0.15	1.50

## SINGLE BOARD BRACKET 360MM WITH SPIGOT

- Made of steel, hot-dip galvanized.
- Serves to extend the scaffolding by one board.



Catalogue no	Weight(KG)
ECS-73-11-03-02	4.80

## SINGLE BOARD BRACKET 360MM

- Made of steel, hot-dip galvanized.
- Serves to extend the scaffolding by one board.



Catalogue no	Weight(KG)
ECS-73-11-03-03	4.50

## DOUBLE BOARD BRACKET 730MM WITH SPIGOT

- Made of steel, hot-dip galvanized.
- Serves to extend the scaffolding by two board or one platform.



Catalogue no	Weight(KG)
ECS-73-11-01-01	7.00

## TRANSOM WITH COUPLERS 730MM

- Made of steel, hot-dip galvanized.
- Allows adjusting the height of the platform.



Catalogue no	Weight(KG)
ECS-73-09-01-01	3.50

## ALUMINIUM STAIRS

- Made of aluminium.
- Non-slip and safe entry onto the scaffolding deck without minimizing the workspace.



Catalogue no	Bay	Width(M)	Weight(KG)
ECS-73-16-02-01	3.07	0.64	28.00
ECS-73-16-02-02	2.57	0.64	24.00

## EXTERNAL ALUMINIUM STAIRS HANDRAIL

- Made of aluminium.
- External handrail for the stairs.



Catalogue no	Bay	Weight(KG)
ECS-73-18-02-01	3.07	17.60
ECS-73-02-05-02	2.57	16.10

## INTERNAL ALUMINIUM STAIRS HANDRAIL

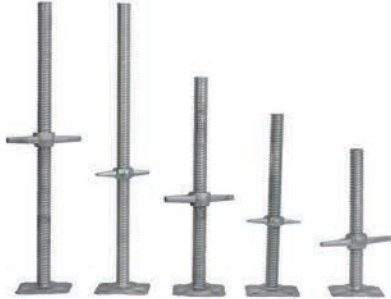
- Made of aluminium.
- Internal handrail for the stairs.



Catalogue no	Weight(KG)
ECS-73-17-02-01	15.00

## BASE JACK

- Made of steel, hot-dip galvanized.
- Base plate dimensions 150 x 150mm.



Catalogue no	Height(M)	Weight(KG)
ECS-UNI-07-01-01 Hot Dip	0.40	2.70
ECS-UNI-07-02-01 Electric	0.50	3.35
ECS-UNI-07-03-01 Hot dip	0.60	3.60
ECS-UNI-07-04-01 Hot dip	0.80	4.50
ECS-UNI-07-04-02 Electric	0.80	4.50

## SINGLE COUPLER

- Made of steel, hot dip galvanized.
- In accordance with DIN EN 74-1RABB standards.



Catalogue no	Weight(KG)
ECS-UNI-02-01-01	1.20

## THREAD BOLT WITH NUT

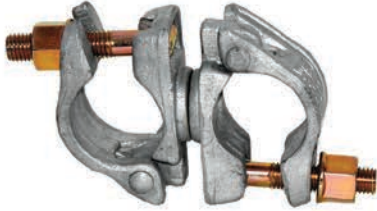
- M14.
- Used for couplers ect.

Catalogue no	Weight(KG)
ECS-UNI-05-01-01	0.20



## SWIVEL COUPLER

- Made of steel, hot-dip galvanized.
- In accordance with DIN EN 74-1 RABB standards.
- Used to connect scaffolding tubes at any angle.



Catalogue no	Weight(KG)
ECS-UNI-03-01-01	1.30

## ANCHOR TUBE

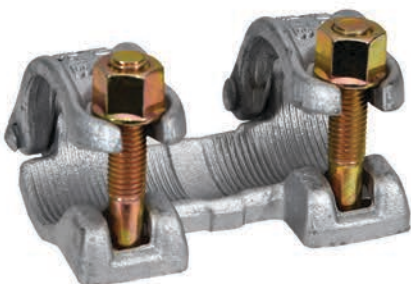
- Made of steel, hot-dip galvanized.
- Used for anchoring the scaffolding to the building.



Catalogue no	Length(M)	Weight(M)
ECS-UNI-01-01-10	0.30	1.30
ECS-UNI-01-01-09	0.40	2.00
ECS-UNI-01-01-07	0.60	2.40
ECS-UNI-01-01-06	1.00	3.90
ECS-UNI-01-01-04	1.20	4.10
ECS-UNI-01-01-01	2.00	7.50

## TENSION COUPLER 48/48

- Made from steel, hot-dip galvanized.
- Clasification according DIN EN 74-1 RA BB.
- For tube diameters of 48.3mm.
- Used only with a pipe conector.
- It is used to connect two pipes in line.



Catalogue no	Weight(KG)
ECS-UNI-04-01-02	1.40

## TUBE(PIPE) CONNECTOR

- Classification according DIN EN 74-LS-B-C.
- Is used with tension coupler

Catalogue no	Weight(KG)
ECS-UNI-08-01-01	1.00



## STEEL LATTICE BEAM

- Profile tube Ø 48.3 x 3.2mm hot-dip galvanized.
- Used to span across roof structures and obstacles.

Catalogue no	Length(M)	Width(M)	Weight(KG)
ECS-UNI-09-01-01	6.20	45.00	59.00
ECS-UNI-09-01-02	5.20	45.00	49.00



## ALUMINIUM LATTICE BEAM

- Profile tube Ø 48.3 x 3.2mm.
- Used to span across roof structures and obstacles.

Catalogue no	Length(M)	Width(M)	Weight(KG)
ECS-UNI-09-02-01	8.20	45.00	32.40
ECS-UNI-09-02-02	7.20	45.00	30.00
ECS-UNI-09-02-03	6.20	45.00	25.10
ECS-UNI-09-02-04	5.20	45.00	20.90
ECS-UNI-09-02-05	4.20	45.00	17.00
ECS-UNI-09-02-06	3.20	45.00	12.70



## SCAFFOLD HOIST ARM

- It is used to hoist material vertically onto the scaffold.
- It includes a block Ø 165mm with a maximum safe working load of 200KG.



Catalogue no	Weight(KG)
ECS-UNI-20-03-01	13.40

## PIG TAIL PIN

- It is used to secure the frame to the frame.
- Prevents frames from separating.



Catalogue no	Weight(KG)
ECS-UNI-10-01-01	0.10

## BEAMS CONNECTOR

- Used to connect two beams.



Length (M)	Weight(KG)
0.62	1.90

## SCAFFOLD RATCHET SPANNER

- It is reversible to either 19mm or 22mm size.



Catalogue no	Weight(KG)
ECS-UNI-23-01-02	0.50

## EYE BOLT

- Made from steel, hot-dip galvanized.
- Dowel necessary.
- Used for tying scaffolding to building.
- Used in conjunction with anchor tube.

Catalogue no	Length(M)	Weight(M)
ECS-UNI-19-01-01	0.09	0.13
ECS-UNI-19-01-02	0.12	0.19
ECS-UNI-19-01-03	0.16	0.22
ECS-UNI-19-01-04	0.19	0.25
ECS-UNI-19-01-05	0.23	0.28
ECS-UNI-19-01-06	0.28	0.30
ESC-UNI-19-01-07	0.30	0.33
ESC-UNI-19-01-08	0.35	0.36
ESC-UNI-19-01-09	0.40	0.40

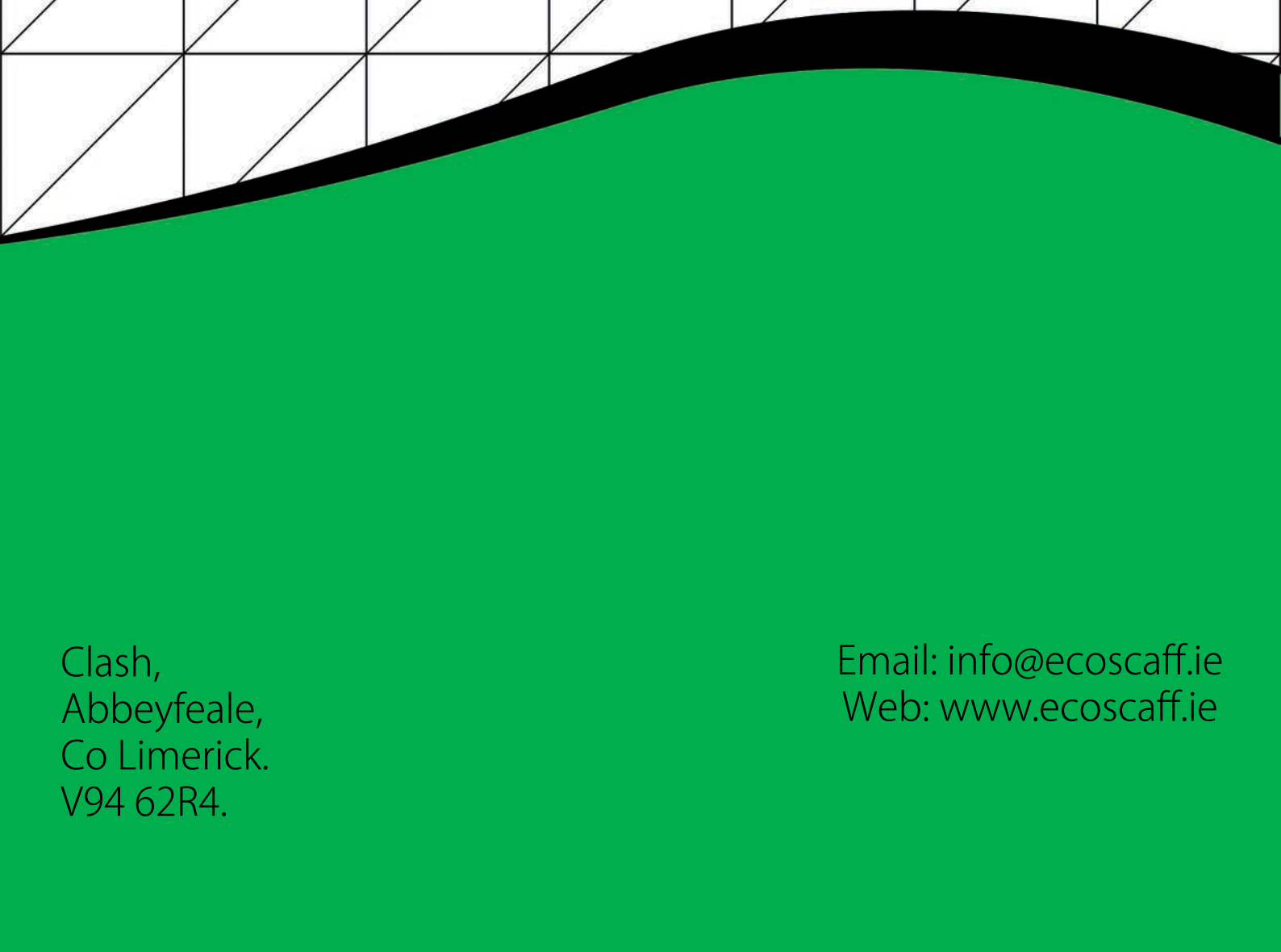
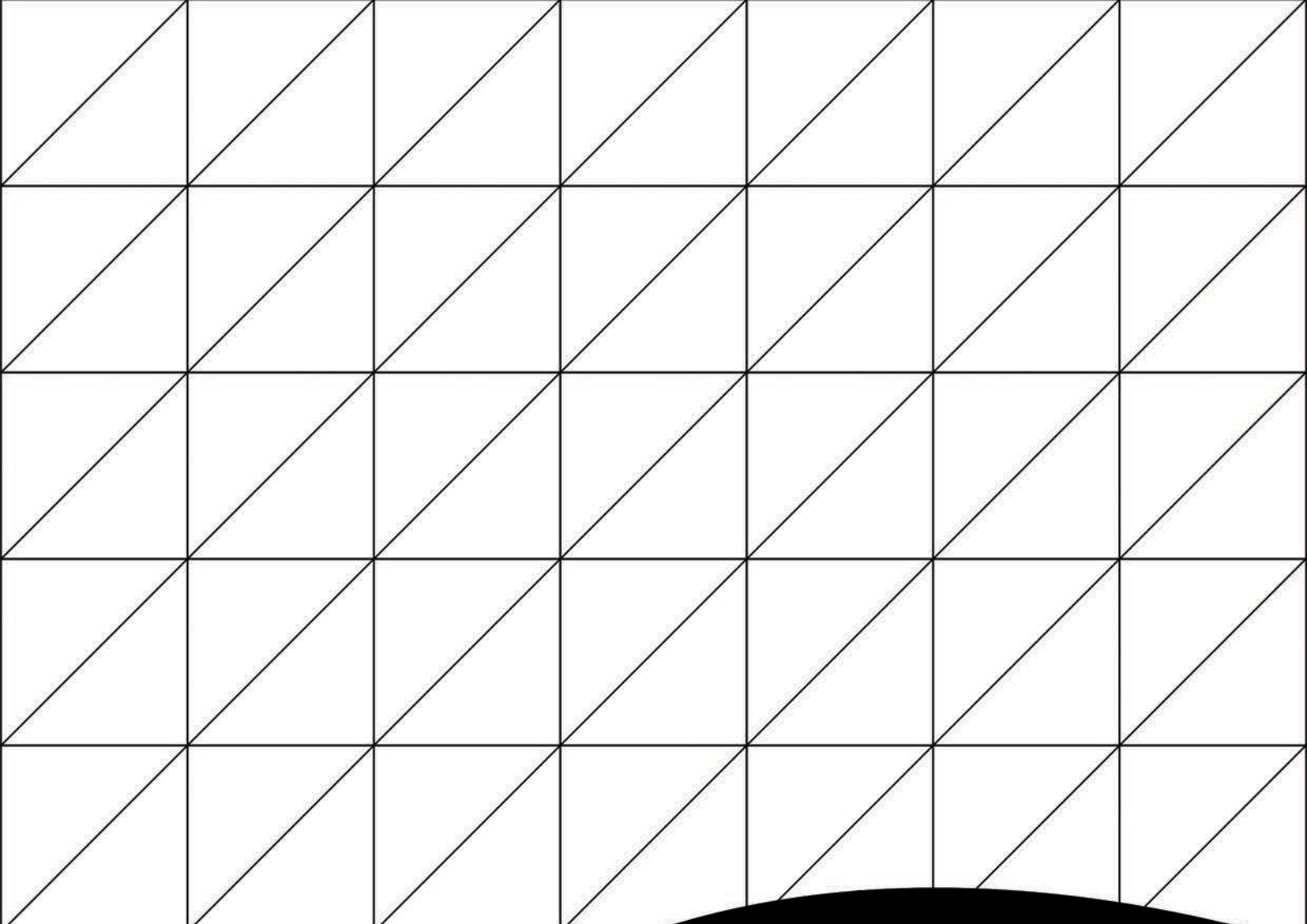


## STEEL TUBE

- Made from steel hot-dip galvanized.

Catalogue no	Length(M)	Weight(M)
ECS-UNI-11-01-02	1.00	4.00
ECS-UNI-11-01-04	2.00	8.00
ECS-UNI-11-01-06	3.00	12.00
ECS-UNI-11-01-08	4.00	16.00
ECS-UNI-11-01-10	5.00	20.00
ECS-UNI-11-01-12	6.00	24.00





Clash,  
Abbeyfeale,  
Co Limerick.  
V94 62R4.

Email: [info@ecoscaff.ie](mailto:info@ecoscaff.ie)  
Web: [www.ecoscaff.ie](http://www.ecoscaff.ie)